

デイリー2019年9月



Oil Pattern Distance: **43 Feet**
 Forward Oil Total: **10.56 mL**
 Forward Boards Crossed: **264 Boards**

Reverse Brush Drop: **39 Feet**
 Reverse Oil Total: **10.92 mL**
 Reverse Boards Crossed: **273 Boards**

Oil Per Board: **40 uL**
 Volume Oil Total: **21.48 mL**
 Total Boards Crossed: **537 Boards**

	Start	Stop	Loads	Speed	Crossed	Start	End	Feet	T.Oil
1	2L	3R	1	14	36	0.0	0.0	0.0	1440
2	4L	4R	1	14	33	0.0	1.9	1.9	1320
3	10L	10R	4	14	84	1.9	9.8	7.9	3360
4	12L	12R	3	18	51	9.8	17.4	7.6	2040
5	13L	13R	4	18	60	17.4	27.6	10.2	2400
6	2L	2R	0	30	0	27.6	43.0	15.4	0

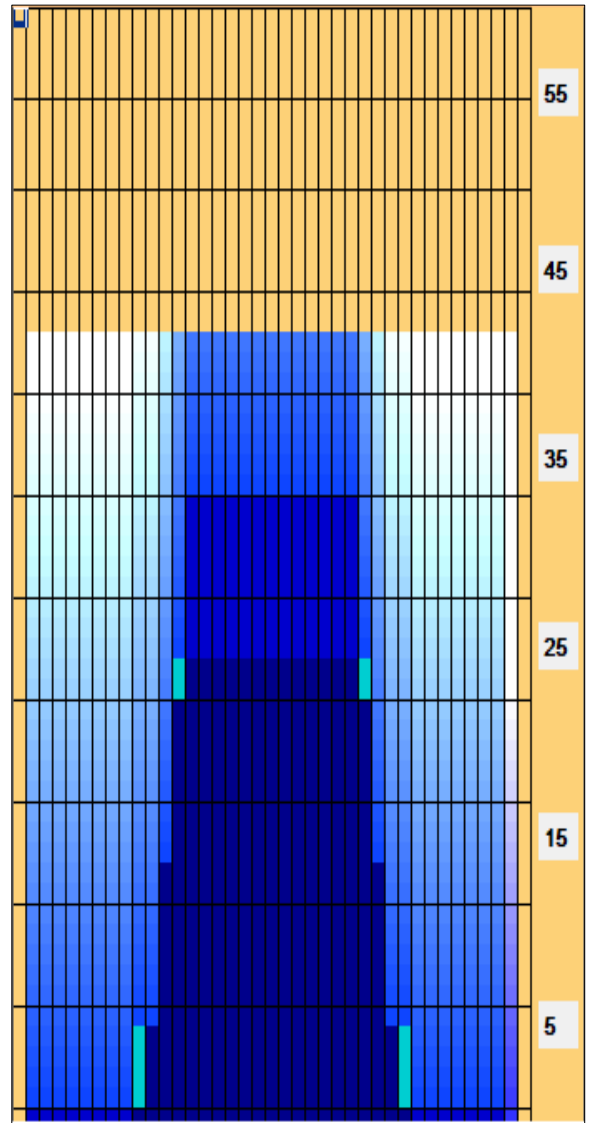
Navigation: Forward Reverse More

	Start	Stop	Loads	Speed	Crossed	Start	End	Feet	T.Oil
1	2L	2R	0	30	0	43.0	35.0	-8.0	0
2	14L	14R	4	18	52	35.0	24.8	-10.2	2080
3	13L	13R	4	14	60	24.8	16.9	-7.9	2400
4	12L	12R	4	14	68	16.9	9.0	-7.9	2720
5	11L	11R	3	10	57	9.0	4.8	-4.2	2280
6	2L	3R	1	10	36	4.8	3.4	-1.4	1440
7	2L	2R	0	10	0	3.4	0.0	-3.4	0

Navigation: Forward Reverse More

Conditioner: Prodigy

TransferType: Transfer Brush



今月こそ本当にハイスコです！安心して下さい。
 コンディション難易度【1】

Item	3L-7L:18L-18R	8L-12L:18L-18R	13L-17L:18L-18R	18L-18R:17R-13R	18L-18R:12R-8R	18L-18R:7R-3R
Description	Outside Track:Middle	Middle Track:Middle	Inside Track:Middle	Middle: Inside Track	Middle:Middle Track	Middle:Outside Track
Track Zone Ratio	10.36	3.63	1.03	1.03	3.63	10.36

